

以下是與海盜相關的展品，你能把它們找出來嗎？  
Can you spot out the following exhibits related to pirates?



戰船「Ariel」  
追擊中國海盜帆船

佚名畫家  
可能是英國  
十九世紀  
油彩布本  
何安達先生送贈  
香港海事博物館藏

"HM Sloop Ariel  
engaging a piratical  
Chinese junk"

Unknown artist  
probably United Kingdom  
19<sup>th</sup> century  
Oil painting on canvas

Gift of Mr. Anthony J. Hardy  
HKMM2010.0192.0009



在中國伶仃的  
鴉片 船 Opium ships  
at Lintin in China

William John Huggins  
(1781-1845年)，約1830年代  
油彩布本

此畫描繪了1820年代中期  
的西方「海洋海盜」

香港海事博物館藏

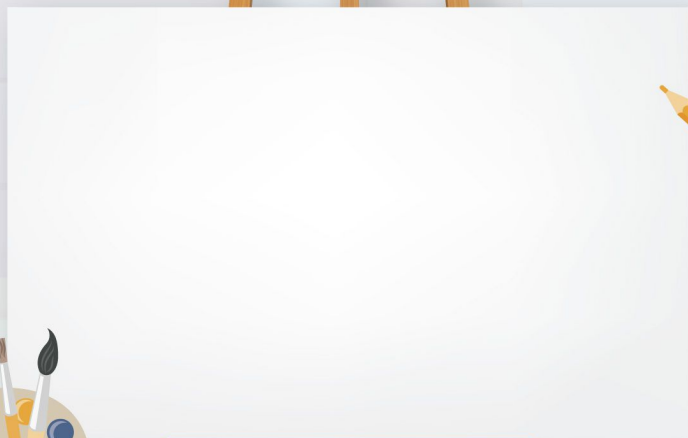
William John Huggins  
(1781-1845), c. 1830s  
Oil on canvas

Mid-1820s scene of  
western 'sea banditry'

HKMM2011.0208.0001

你在香港海事博物館中最喜愛的展品是什麼？請繪畫出來並與你的家人和朋友分享。

What is your favourite exhibit in the Hong Kong Maritime Museum?  
Please draw it in the below area and share it with your family members and friends.



答案及詳情  
Answer & Details



# 海盜 Pirate



HONG KONG  
maritime  
museum  
香港海事博物館

請回答下列與海盜相關的問題 (中文)。  
Please answer the following questions related to pirates (Chinese only).

直  
Down

- 1 哪幅卷軸描繪了清朝嘉慶年間朝廷掃平海患的事件? (四個字)  
(Which scroll describes how the Qing government suppressed the big-scale piracy in the early 19<sup>th</sup> century? (Four words))
- 2 海盜張保仔活躍於中國哪個海域? (四個字)  
(Pirate Cheung Po Tsai was active in which area? (Four words))
- 3 請寫出在「靖海全圖」中哪一個場景講述了火船攻擊海盜的經過。(四個字)  
(Which part of the scroll 'Pacifying the South China Sea' describes the attack against the pirates by fireships? (Four words))
- 4 哪位清朝兩廣總督奉命鎮壓海盜張保仔? (兩個字)  
(Which Governor General of Guangdong and Guangxi of the Qing dynasty was appointed to suppress pirate Cheung Po Tsai? (Two words))

			2 南		5 張	保	仔
			中				
			國		3 火	6 炮	
記	氛	海	1 靖		攻		
			海		盜		
			全		艘		
	4 百		圖				
	齡						



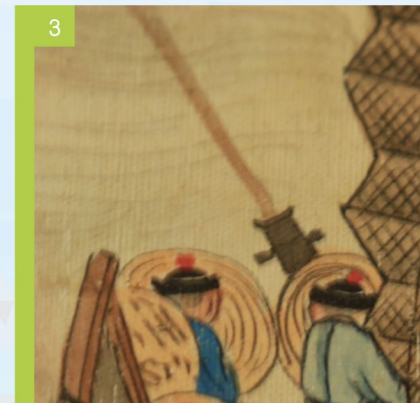
橫  
Across

- 5 請寫出清朝南中國海一位著名海盜的名字。(三個字)  
(Please write down the name of a famous pirate in the South China Sea during the Qing dynasty. (Three words))
- 6 海盜張保仔等人擁有哪些武器(共有 5,000-6,000 門)?(兩個字)  
(Which type of weapon did pirate Cheung Po Tsai and other possess? (around 5,000-6,000) (Two words))
- 7 「靖海全圖」描繪的情景與哪本書籍一脈相承?(四個字)  
(Which book corresponds to the scenario depicted in the scroll? (Four words))

「靖海全圖」描述了清朝嘉慶年間(十九世紀)清廷瓦解雄據於廣東沿海岸海盜的經過。  
The scroll 'Pacifying the South China Sea' describes the story of how piracy in Guangdong was suppressed by the forces of the Jiaqing Emperor in the early 19<sup>th</sup> century.

你知道在「靖海全圖」中水師所使用的武器有哪些嗎?

Can you recognise the kind of weapons deployed by the Chinese troops in the scroll 'Pacifying the South China Sea'?



你的答案 Your answers :

1 弓箭 Bow and arrow

2 刀劍 Sword

3 後裝炮 Breech-loading cannon

4 步槍 Rifle

作為一位船長，你能找出下列和航海有關的展品嗎？  
As a captain, can you recognise the following exhibits related to sailing?



### 船長用 擴音器

National Steam  
Navigation Company  
英國利物浦  
十九世紀後期至  
二十世紀初期  
銀製

香港海事博物館藏

### Captain's speaking

National Steam  
Navigation Company  
Liverpool  
Late 19<sup>th</sup> Century to  
early 20<sup>th</sup> Century  
Silver

HKMM2010.0030.0002



### 航海 計時器

1845年

運作時滴答聲：由美國公司  
Bliss & Creighton製作，透過  
精確測定經度，可在海上計算  
實際時間，對安全航海活動  
重要。

香港海事博物館藏

### A ship's Chronometer with a regular 'tick-tock' sound

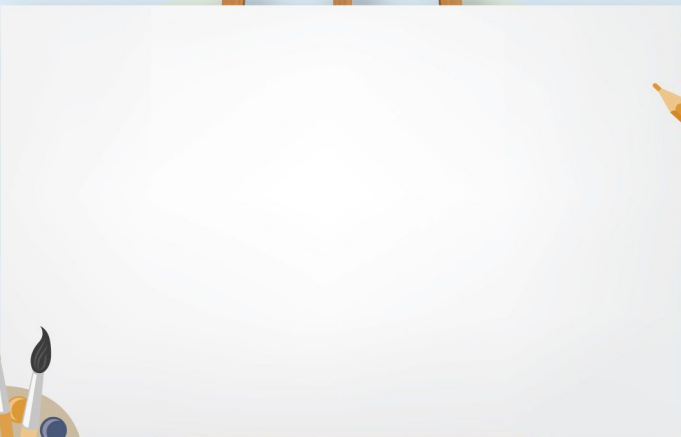
1845

Produced by Bliss & Creighton in  
the USA, it could calculate the  
longitude at sea and function as a  
precise timepiece, it was essential  
to safe navigation.

HKMM2008.0216.0004

你在香港海事博物館中最喜愛的展品是什麼？請繪畫出來並與你的家人和朋友分享。

What is your favourite exhibit in the Hong Kong Maritime Museum?  
Please draw it in the below area and share it with your family members and friends.



答案及詳情  
Answer & Details



# 船長 Ship Captain



HONG KONG  
maritime  
museum  
香港海事博物館

請找出下列與海上導航相關的展品，並以畫線的方式連結它們的影子。  
Please find out items related to maritime navigation and match them with their shadows.

### 羅盤

二十世紀，丹麥  
黃銅及木製  
Iver C. Weilbach Co.

**Binnacle with Solver & Svarrer magnetic compass**

Denmark, 20<sup>th</sup> century  
Brass and wood  
Iver C. Weilbach & Co.  
HKMM2016.0016.0001



### 香港海事博物館 雷達系統

由日本無線捐贈

The Hong Kong Maritime Museum  
Radar System

Donated by Japan Radio Co. Ltd  
HKMM2012.0119.0001



### 橫瀾燈塔(複製)及AGA燈

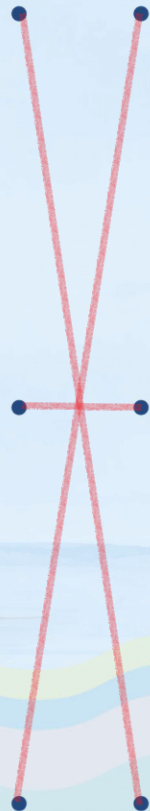
1948-1949 年  
AGA (Gas Accumulator Co.) ·  
斯德哥爾摩 Lidingö

康樂及文化事務署香港歷史博物館借出  
鳴謝香港特別行政區政府海事處

**AGA Fresnel lens in replica  
Waglan Lighthouse lantern**

1948-1949  
AGA (Gas Accumulator Co.),  
Stockholm- Lidingö

On loan from the Hong Kong Museum of History, LCSD  
Courtesy of the Marine Department, HKSAR  
HKMM2013.0005.0001



請找出以下與海上安全相關的隱藏英文詞語並把它們圈出來。  
Please find out the hidden English words which are related to sea safety and draw a circle around them.

COMPASS (指南針)

EMERGENCY (緊急)

FLOATING (浮動)

ICEBERG (冰山)

LIFEBOAT (救生艇)

LIGHTHOUSE (燈塔)

LIFE JACKET (救生衣)

TELESCOPE (望遠鏡)

SEA RISKS (海上風險)

SINKING (下沉)

WHISTLE (哨子)



作為一位專業的水下考古學家，請找出下列的文物！  
As a professional underwater archaeologist, please find out the following artifacts!



中國外銷 瓷  
與沉積群組

越南頭頓沉船  
十七世紀晚期

佳士得香港有限公司捐贈  
香港海事博物館藏

Coral encrusted  
ceramic

Cluster of Chinese export porcelain  
from the wreck of the Vung Tau  
Late 17<sup>th</sup> century

Gift of Christie's Hong Kong Limited  
HKMM2005.0001.0001



青白 釉瓷 片

西貢伙頭墳洲出水  
福建製  
元代

古物古蹟辦事處借展

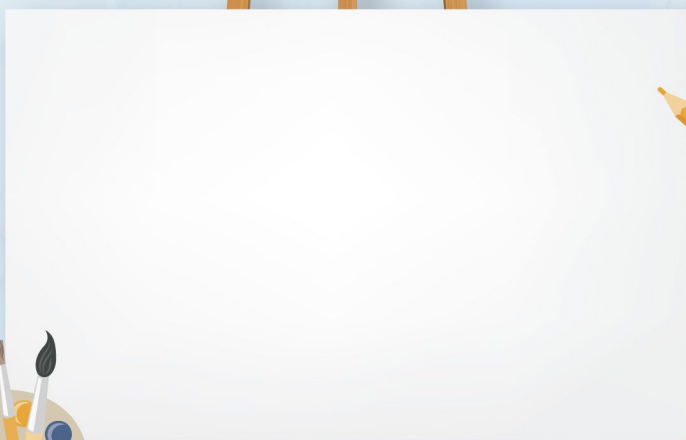
Qingbai-  
glaze  
shard

Discovered at Town Island, Sai Kung  
Made in Fujian  
Yuan dynasty (960-1644)

On loan from the Antiquities and  
Monuments Office

你在香港海事博物館中最喜愛的展品是什麼？請繪畫出來並與你的家人和朋友分享。

What is your favourite exhibit in the Hong Kong Maritime Museum?  
Please draw it in the below area and share it with your family members and friends.



答案及詳情  
Answer & Details



# 水下考古學家

## Underwater Archaeologist



HONG KONG  
maritime  
museum  
香港海事博物館

請找出與水下考古有關的隱藏英文詞語並把它們圈出來。  
Please find out the hidden English words related to underwater archaeology and draw a circle around them.

ARTIFACTS (文物)

DEEP SEA (深海)

DISCOVERY (發現)

DIVING BELL (潛水鐘)

DIVING HELMET (潛水頭盔)

SUBMARINE (潛艇)

SUBMERGED (淹沒的)

HISTORIC SHIPWRECK (古代沉船)

HUMAN REMAINS (人體遺骸)

S . . . . D I S C O V E R Y A . .  
 . U H U M A N R E M A I N S . R . D  
 . B . . . . . D . . . S T . I  
 . M . . . . . E . . . U I . V  
 . A . . . . . E . . . B F . I  
 . R . . . . . P . . . M A . N  
 . I . . . . . S . . . E C . G  
 . N . . . . . E . . . R T . B  
 . E . . . . . A . . . G S . E  
 H I S T O R I C S H I P W R E C K L  
 . . D I V I N G H E L M E T D . . L  
 . . . . . . . . . . . . . . .

這是在香港海域找到的水下考古文物。你知道它的故事嗎？

This is an underwater archaeological artifact found in Hong Kong's waters. Do you know its stories?

請回答以下問題。  
Please answer the following questions.



古物古蹟辦事處借展  
On loan from the Antiquities  
and Monuments Office

問題 Questions :

- 1 文物的名稱是?  
What is the name of this artifact?
- 2 文物是在哪裏發現的?  
Where had we found this artifact?
- 3 是誰找到這個文物?  
Who had found this artifact?
- 4 這個文物的功能是什麼?  
What was the function of this artifact?



你的答案 Your answers :

- |   |                                |   |   |
|---|--------------------------------|---|---|
| 1 | 糧船灣洲宋代碇石<br>Stone anchor stock | 3 | 考古學家 Dr. William Jeffery<br>和香港水下文化遺產小組<br>Archaeologist: Dr. William Jeffery<br>& The Hong Kong Underwater<br>Heritage Group (HKUHG) |
| 2 | 西貢海域<br>Sai Kung waters        | 4 | 用以固定位置的其中一個石製組件<br>A heavy object that<br>use to moor a shipto the sea bottom.  |

作為一位商人，你能找出下列的文物嗎？  
As a merchant, can you recognise the following artifacts?



1690年西班牙大帆船  
「聖非利佩號」模型

木  
2005年  
香港海事博物館藏

Spanish galleon  
San Felipe (1690)

Wood  
2005  
HKMM2005.0099.0001

粉彩 仿麥森 瓷船形  
醬汁容器 托盤一對

中國  
1740-1750  
香港海事博物館藏

Pair of Chinese export  
porcelain Meissen Style  
sauce boat stand

China  
1740-1750  
HKMM2013.0053.0003b&d



你在香港海事博物館中最喜愛的展品是什麼？請繪畫出來並與你的家人和朋友分享。

What is your most favourite exhibit in the Hong Kong Maritime Museum?  
Please draw it in the below area and share it with your family members and friends.



答案及詳情  
Answer & Details

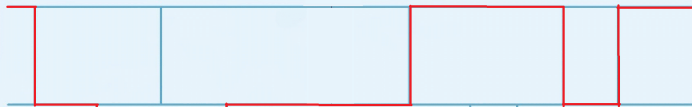


# 商人 Merchant

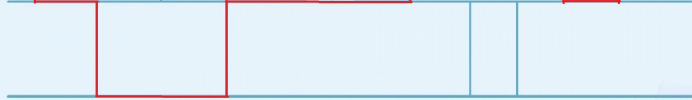




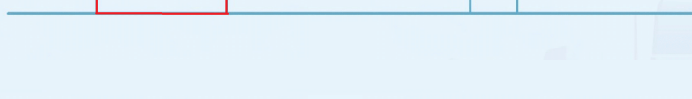
這些是你公司售賣的香料，請以「畫鬼腳」的方式逐一沿路線找出它們的照片。  
 These are the spices your company trades with other countries. Please match the names with their photos.



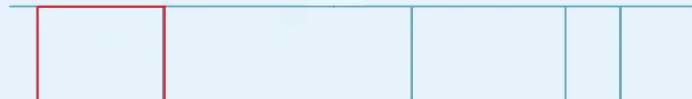
檫椒  
Peppercorn



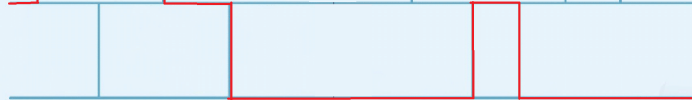
丁香  
Cloves



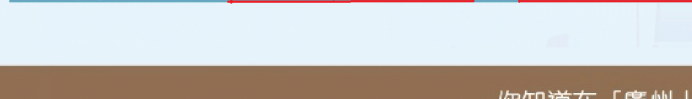
玉桂  
Cinnamon



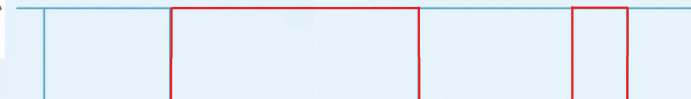
檫椒  
Peppercorn



丁香  
Cloves



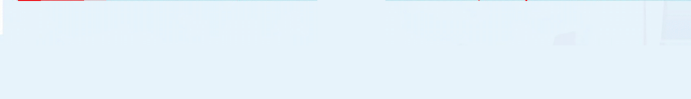
玉桂  
Cinnamon



檫椒  
Peppercorn



丁香  
Cloves



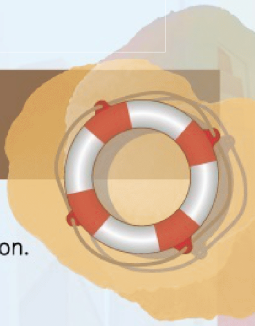
玉桂  
Cinnamon

你知道在「廣州十三行洪氏卷軸」中的五面國旗代表哪些國家嗎？

Can you recognise the five countries represented by the national flags in The Alexander Hume Scroll Painting of Foreign Factories in Canton?

「廣州十三行洪氏卷軸」描述了廣州實施「一口通商」(十八世紀中至十九世紀中)時的情況。

'The Alexander Hume Scroll Painting of Foreign Factories in Canton' depicts the Canton Trade system (1757-1842) which restricted maritime commerce to Canton.



- 1 丹麥 Denmark
- 2 法國 France
- 3 瑞典 Sweden
- 4 英國 Britain
- 5 荷蘭 The Netherlands



作為一名海員，你能辨認出下列哪項展品與宗教信仰有關嗎？請在空格上填✓。

As a sailor, can you recognise which of the following exhibits are related to religious rituals? Put a ✓ if they are.



五彩大盤

福建漳州窯造  
明代萬歷年間 (1573-1620年)  
何安達先生惠贈  
HKMM2004.0046.0001

Large dish with wucai (five enamels)  
decoration

Zhangzhou Kiln, Fujian Province  
Wanli period, Ming Dynasty (1573-1620 CE)  
Gift of Mr. Anthony J. Hardy

形似觀音古董船首像

佚名工匠  
十九或二十世紀  
漆木製  
香港海事博物館藏

Antique figurehead, possibly of Guanyin

Unknown maker  
19<sup>th</sup>/20<sup>th</sup> Century  
Painted wood  
HKMM2004.0223.0001



你在香港海事博物館中最喜愛的展品是什麼？請繪畫出來並與你的家人和朋友分享。

What is your most favourite exhibit in the Hong Kong Maritime Museum?  
Please draw it in the below area and share it with your family members and friends.



答案及詳情  
Answer & Details



# 海員 Sailor



請找出下列與宗教儀式相關的展品，並以畫線的方式連結它們的相片。

Take a look at the items related to marine religious beliefs and match them with their photos.



### 筊杯

用於求問神靈之用。一面是陰，另一面是陽。

#### Divination (or Moon) blocks

They are commonly used in temples to ask certain favours of the gods.



### 家神牌

通常是雙雙對對的老翁老嫗、成年男女或童男童女。

#### Standard forms of an Ancestors' tablet

Standard forms of an Ancestors' tablet include pairs of the Elderly Man and Lady, the Mature Man and Woman and the pre-pubescent boy and girl.

### 騎鶴「先娘」

Female family Immortals



提示：它們在 B 層展覽。  
Hints: They are in B Deck.

不少海員出海前都會祈求神明庇佑航行安全。請寫出下列各神像的名稱。

Sailors often worship divines before the start of a sail. Let's find out the names of these religious statues!



### 彩繪木雕「國姓爺」鄭成功坐像

清代初期  
陳憲宗先生贈以紀念其姊陳淑貞女士

Carved and polychrome wooden figure of Koxinga

Early Qing Dynasty  
Gift of Mr. James Chen in remembrance of his sister Mrs. Susan Chen Hardy

### 金漆木雕池王爺坐像

19世紀末  
香港海事博物館藏

Seated figure of the Lord

Chi Wangye

Late 19<sup>th</sup> Century  
HKMM2016.0018.0017



### 金漆木雕天后坐像

十九世紀晚期  
香港海事博物館藏

Wooden figure of seated

Tin Hau

Late 19<sup>th</sup> Century  
HKMM2016.0018.0012



你是十九世紀的海洋探險家，請找出下列展品：  
You are an ocean explorer of the 19<sup>th</sup> century, please spot out the following exhibits:



粉彩內繪 洋人  
持杯外繪描金字母  
團紋大瓷碗

佚名工匠，中國  
清朝(十九世紀)  
何安達先生送贈  
香港海事博物館藏

A punch bowl with fencal  
decoration eight gilt  
monograms in medallions  
on the exterior and a  
European holding a cup  
on the inside base

Unknown maker, China  
Qing Dynasty (19<sup>th</sup> Century)  
Gift of Mr. Anthony J. Hardy  
HKMM2006.0141.0004



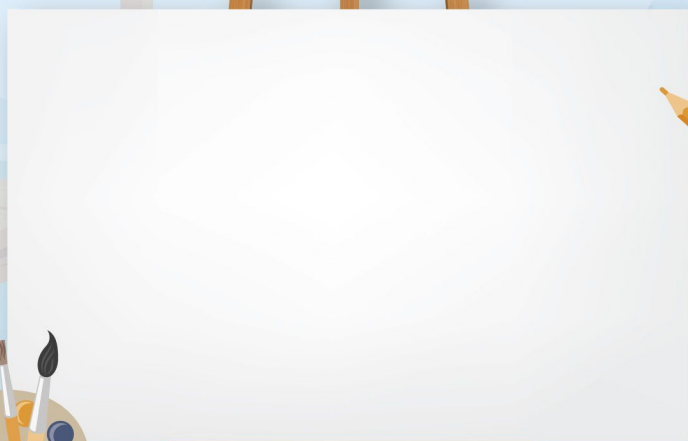
雙格 茶葉 盒 Tea caddy with  
two compartments

佚名工匠，中國  
十九世紀初期  
香港海事博物館藏

Unknown maker, China  
Early 19<sup>th</sup> century  
HKMM2005.0022.0001

你在香港海事博物館中最喜愛的展品是什麼？請繪畫出來並與你的家人和朋友分享。

What is your favourite exhibit in the Hong Kong Maritime Museum?  
Please draw it in the below area and share it with your family members and friends.



答案及詳情  
Answer & Details



# 海洋探險家 Ocean Explorer



這些是你在探險過程中發現的新事物，讓我們一起記錄它們的名字吧！  
These are the new discoveries during your journey. Let's record their names together!

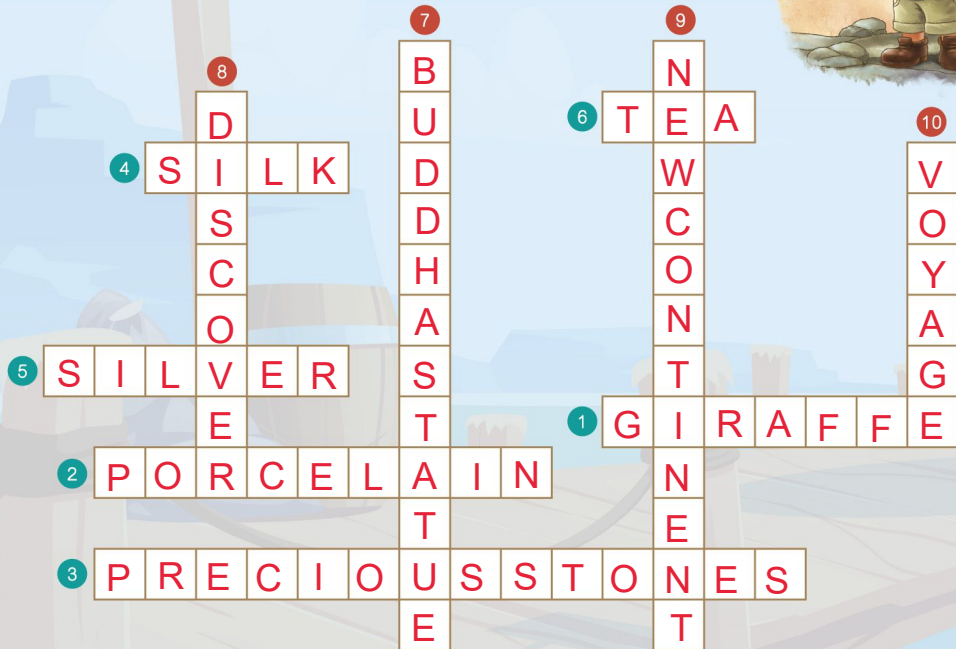
請用提供的英文單詞填寫於空白處  
Please fill in the blanks with the English words provided

橫  
Across

- 1 GIRAFFE (長頸鹿)
- 2 PORCELAIN (瓷器)
- 3 PRECIOUS STONES (寶石)
- 4 SILK (絲綢)
- 5 SILVER (白銀)
- 6 TEA (茶葉)

直  
Down

- 7 BUDDHA STATUE (佛像)
- 8 DISCOVER (發現)
- 9 NEW CONTINENT (新大陸)
- 10 VOYAGE (航海)



你能找出下列船隻的名字及它們的探險故事嗎？  
Can you find out the names of these ships and their stories of explorations?

提示：它們在C層展廳  
Hints: They are in C Deck



葡萄牙 武裝商船  
「聖賈比優號」模型  
Display model of the Portuguese carrack (nau)  
São Gabriel

佚名工匠  
澳門，2004年

武裝商船船型雖小，卻擁有革命性的設計，船帆可因應海上情況轉變而調校，是促使西歐發展海事世界的重要工具。

香港海事博物館藏

Unknown maker,  
Macao, 2004

Carracks were small but revolutionary. Their adaptable rigs enabled them to work leeward, making them key tools of western expansion.

HKMM.2004.0244.0001

明代(1368-1644年)  
鄭和 寶船模型  
Display model of Treasure  
Ming Dynasty (1368-1644)

江蘇省鄭和研究會船模製作中心  
中國，2005年

香港海事博物館藏

Ship Model Making Centre,  
Zhenghe Research Association  
in Jiangsu Province,  
China, 2005

HKMM2005 0118.0001



荷蘭 船  
「巴達維亞號」  
(1628) 模型  
Display model of Dutch  
ship, *Batavia* (1628)

富創國際有限公司  
香港，2005年

十七世紀，歐洲的東印度公司建造了一系列同時具備軍事及貿易用途的遠洋船「印度人」，「巴達維亞號」是其中之一；她於1629年6月在澳洲西部沉沒。

香港海事博物館藏

Rich Creation International Ltd.  
Hong Kong, 2005

By the 17<sup>th</sup> century the European East India Companies had created the Indiaman; a design part cargo ship, part-warship. The *Batavia* was wrecked off Western Australia in June 1629.

HKMM2005.0100.0001

