

作為一名海員，你能辨認出下列哪項展品與宗教信仰有關嗎？請在空格上填✓。

As a sailor, can you recognise which of the following exhibits are related to religious rituals? Put a ✓ if they are.



五彩大盤

福建漳州窑造
明代萬歷年間 (1573-1620年)
何安達先生惠贈
HKMM2004.0046.0001

Large dish with wucai (five enamels) decoration

Zhangzhou Kiln, Fujian Province
Wanli period, Ming Dynasty (1573-1620 CE)
Gift of Mr. Anthony J. Hardy

形似觀音古董船首像

佚名工匠
十九或二十世紀
漆木製
香港海事博物館藏

Antique figurehead, possibly of Guanyi

Unknown maker
19th/20th Century
Painted wood
HKMM2004.0223.0001



你在香港海事博物館中最喜愛的展品是什麼？請繪畫出來並與你的家人和朋友分享。

What is your most favourite exhibit in the Hong Kong Maritime Museum?
Please draw it in the below area and share it with your family members and friends.



答案及詳情
Answer & Details



海員 Sailor



請找出下列與宗教儀式相關的展品，並以畫線的方式連結它們的相片。

Take a look at the items related to marine religious beliefs and match them with their photos.



不少海員出海前都會祈求神明庇佑航行安全。請寫出下列各神像的名稱。

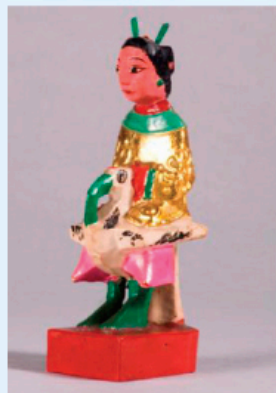
Sailors often worship divines before the start of a sail. Let's find out the names of these religious statues!

筊杯

用於求問神靈之用。一面是陰，另一面是陽。

Divination (or Moon) blocks

They are commonly used in temples to ask certain favours of the gods.



家神牌

通常是雙雙對對的老翁老嫗、成年男女或童男童女。

Standard forms of an Ancestors' tablet

Standard forms of an Ancestors' tablet include pairs of the Elderly Man and Lady, the Mature Man and Woman and the pre-pubescent boy and girl.



騎鶴「先娘」

Female family Immortals



彩繪木雕「國姓爺」鄭成功坐像

清代初期
陳憲宗先生贈以紀念其姊陳淑貞女士

Carved and _____ figure of Koxinga

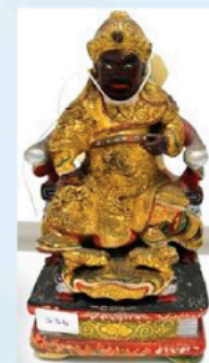
Early Qing Dynasty
Gift of Mr. James Chen in remembrance of his sister Mrs. Susan Chen Hardy

金漆木雕池王爺坐像

19世紀末
香港海事博物館藏

Seated figure of the Lord _____

Late 19th Century
HKMM2016.0018.0017



金漆木雕天后坐像

十九世紀晚期
香港海事博物館藏

Wooden figure of seated _____

Late 19th Century
HKMM2016.0018.0012



提示：它們在B層展覽。
Hints: They are in B Deck.

