

作為一位船長，你能找出下列和航海有關的展品嗎？  
As a captain, can you recognise the following exhibits related to sailing?



### 船長用

National Steam  
Navigation Company  
英國利物浦  
十九世紀後期至  
二十世紀初期  
銀製

香港海事博物館藏

### Captain's

National Steam  
Navigation Company  
Liverpool  
Late 19<sup>th</sup> Century to  
early 20<sup>th</sup> Century  
Silver

HKMM2010.0030.0002



### 航海

1845年

運作時滴答聲：由美國公司  
Bliss & Creighton 製作，透過  
精確測定經度，可在海上計算  
實際時間，對安全航海活動  
重要。

香港海事博物館藏

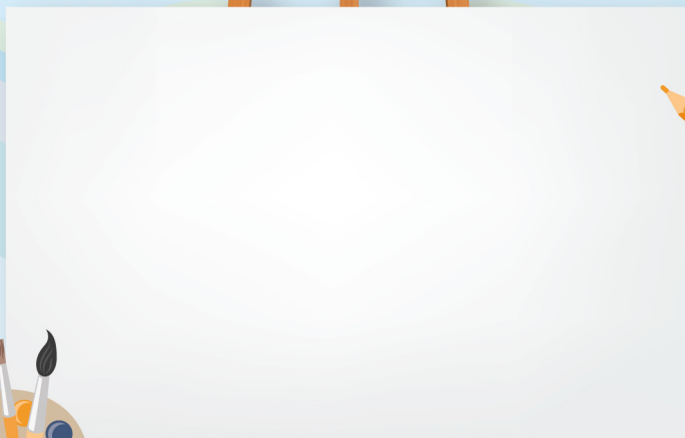
### A ship's with a regular 'tick-tock' sound

1845

Produced by Bliss & Creighton in  
the USA, it could calculate the  
longitude at sea and function as a  
precise timepiece, it was essential  
to safe navigation.

HKMM2008.0216.0004

你在香港海事博物館中最喜愛的展品是什麼？請繪畫出來並與你的家人和朋友分享。  
What is your favourite exhibit in the Hong Kong Maritime Museum?  
Please draw it in the below area and share it with your family members and friends.



答案及詳情  
Answer & Details



# 船長 Ship Captain



請找出下列與海上導航相關的展品，並以畫線的方式連結它們的影子。  
Please find out items related to maritime navigation and match them with their shadows.

## 羅盤

二十世紀，丹麥  
黃銅及木製  
Iver C. Weillbach Co.

**Binnacle with Solver &  
Svarrer magnetic  
compass**

Denmark, 20<sup>th</sup> century  
Brass and wood  
Iver C. Weillbach & Co.  
HKMM2016.0016.0001



## 香港海事博物館 雷達系統

由日本無線捐贈

**The Hong Kong Maritime Museum  
Radar System**

Donated by Japan Radio Co. Ltd  
HKMM2012.0119.0001



## 橫瀾燈塔(複製)及AGA燈

1948-1949 年  
AGA (Gas Accumulator Co.) ·  
斯德哥爾摩 Lidingö

康樂及文化事務署香港歷史博物館借出  
鳴謝香港特別行政區政府海事處

**AGA Fresnel lens in replica  
Waglan Lighthouse lantern**

1948-1949  
AGA (Gas Accumulator Co.),  
Stockholm- Lidingö

On loan from the Hong Kong Museum of History, LCSD  
Courtesy of the Marine Department, HKSAR  
HKMM2013.0005.0001



請找出以下與海上安全相關的隱藏英文詞語並把它們圈出來。  
Please find out the hidden English words which are related to sea safety and draw a circle around them.

COMPASS (指南針)

EMERGENCY (緊急)

FLOATING (浮動)

ICEBERG (冰山)

LIFEBOAT (救生艇)

LIGHTHOUSE (燈塔)

LIFE JACKET (救生衣)

TELESCOPE (望遠鏡)

SEA RISKS (海上風險)

SINKING (下沉)

WHISTLE (哨子)

U P V B V Z D T F V W Y Y N V C M L  
M M B G K I E L E L Y H L Q A R O I  
Z F R A O N C E I L I R I R Y X T G  
S S V F M Y N E M F E F P S Y Q W H  
E I W L M D Y U B E E S E M T R O T  
A N K O J E O Q Q E R J C B V L V H  
R K Y A A E B B K S R G A O O Y E O  
I I C T M G E R S B L G E C P A I U  
S N J I S A C C L H Y R H N K E T S  
K G N N Z F G U C R I B I V C E J E  
S C Y G D E I J R F J P B O A Y T V  
V M T Y P H B Z Q C C O M P A S S B

